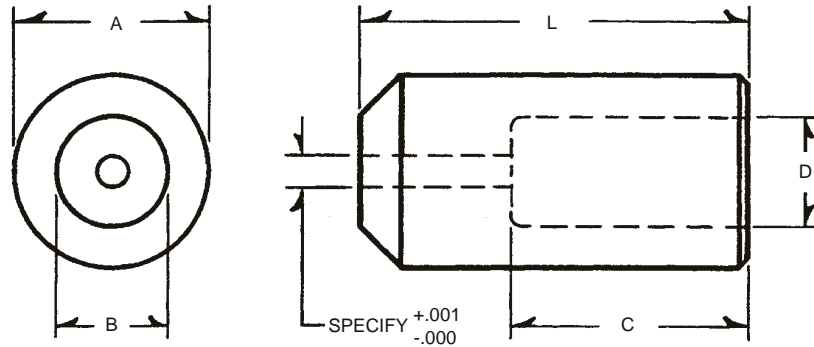


CONING PUNCHES



| MACHINE | CODE NO. | A | B | C | D | L |
|-----------------------------|----------|-------|-------|--------|------|---------|
| 1/4 Hartford Special | CP-250 | 1.123 | .625 | 1-3/8 | .660 | 2-19/32 |
| 1/8 Headmaster | CP-12 | .624 | — | 5/8 | .375 | 1-5/8 |
| 3/16 HiPro | CP-18 | .875 | 1/2 | 1-1/16 | .500 | 1-3/4 |
| 1/4 Waterbury | CP-25 | 1.498 | 1-1/8 | 1 | .625 | 1-15/16 |
| 0 WFF | CP-0 | .874 | 3/8 | 1 | .437 | 1-1/2 |
| 1 WFF | CP-1 | .874 | 1/2 | 1 | .500 | 1-1/2 |
| 2 WFF | CP-2 | 1.061 | 1/2 | 1-1/16 | .625 | 2-3/8 |

WARNING

Any heading punch may break or shatter under improper use. Government regulations require use of safety glasses and other appropriate safety equipment at all times in the vicinity of use.