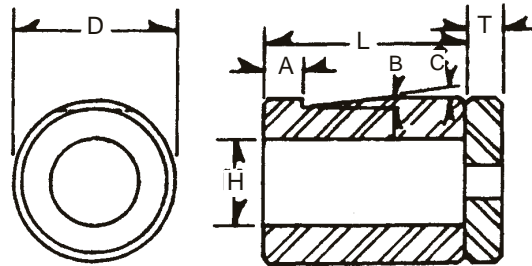


HEADER DIE CASINGS FOR H.S. STEEL & CARBIDE INSERTS

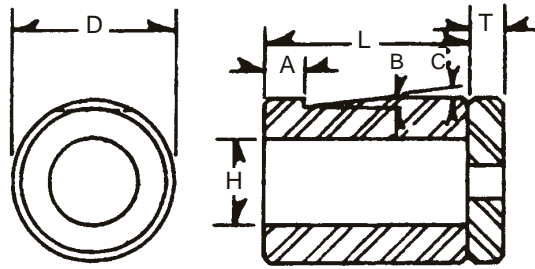


MACHINE	CODE NO.	D	L	T	H	A	B	C
1/8 National S.S.	12DC	.999	1-1/4	1/8	.550	—	—	—
1/8 National S.S.	12DA-C	.999	1-1/8	1/4	.495	—	—	—
1/8 Hartford	12DC	.999	1-1/4	1/8	.550	—	—	—
1/8 Hartford	12DA-C	.999	1-1/8	1/4	.495	—	—	—
1/8 Hartford	12DA-2C	.999	1-1/4	1/8	.495	—	—	—
1/8 National L.S.	12DC-1	.999	1-5/8	1/8	.550	—	—	—
1/8 National L.S.	12DA-1C	.999	1-1/2	1/4	.495	—	—	—
1/8 Headmaster	12DC-3	1.124	1	3/8	.550	5/16	3/32	10°
1/8 Headmaster	12DA-3C	1.124	1	3/8	.495	5/16	3/32	10°
0 Waterbury Toggle	12DC-4	1.124	7/8	1/4	.550	5/16	1/16	5°
0 Waterbury Toggle	12DA-4C	1.124	7/8	1/4	.495	5/16	3/32	5°
25 National H.S.	18DC-23	1.249	1-1/2	1/4	.550	—	—	—
25 National H.S.	18DA-5C	1.249	1-1/2	1/4	.495	—	—	—
1 Waterbury Toggle	18DC-15	1.249	1-1/4	3/8	.737	7/16	1/16	5°
1 Waterbury Toggle	18DA-15C	1.249	1-1/4	3/8	.495	7/16	1/16	5°
3/16 HiPro	18DC-9	1.249	1-1/4	3/8	.737	1/4	5/64	5°
3/16 HiPro	18DA-9C	1.249	1-1/4	3/8	.495	1/4	5/64	5°
3/16 Headmaster	18DC-9	1.249	1-1/4	3/8	.737	1/4	5/64	5°
3/16 Headmaster	18DC-16	1.249	1-1/2	3/8	.737	1/4	1/16	5°
3/16 Headmaster	18DA-16C	1.249	1-1/2	3/8	.495	5/16	5/64	5°
3/16 National S.S.	18DC-1	1.249	1-5/8	1/8	.737	1/2	3/32	4°
3/16 National S.S.	18DA-1C	1.249	1-1/2	1/4	.495	1/2	3/32	4°
3/16 National L.S.	18DC-17	1.249	2-5/8	1/8	.737	11/16	5/32	15°
3/16 National L.S.	18DA-17C	1.249	2-1/2	1/4	.495	11/16	5/32	15°
3/16 National L.S.	18DA-19C	1.624	2-1/2	1/4	.620	3/4	—	15°
3/16 National H.S.	18DC-24	1.499	1-1/2	1/4	.737	9/16	1/8	15°
3/16 National H.S.	18DA-18C	1.499	1-1/2	1/4	.620	9/16	—	15°
3/16 Hartford	18DC-25	1.499	2	1/4	.737	9/32	3/32	4°
3/16 Hartford	18DC-26	1.499	2	1/4	.550	9/32	3/32	4°
3/16 Hartford	25DA-C	1.499	2	1/4	.620	9/32	3/32	4°
3/16 Waterbury	18DC-3	1.499	2-1/2	1/2	.862	7/8	5/32	10°
3/16 Waterbury	18DA-3C	1.499	2-1/2	1/2	.620	7/8	5/32	10°
H20 Nakashimada	18DC-3	1.499	2-1/2	21/32	.862	7/8	5/32	10°
H20 Nakashimada	18DA-3C	1.499	2-1/2	21/32	.620	7/8	5/32	10°
SP-01 Sacma	18DC	1.249	1-5/8	—	.550	1/2	3/32	4°
SP-01 Sacma	18DC-1	1.249	1-5/8	—	.737	1/2	3/32	4°

WARNING

Any heading punch may break or shatter under improper use. Government regulations require use of safety glasses and other appropriate safety equipment at all times in the vicinity of use.

HEADER DIE CASINGS FOR H.S. STEEL & CARIDE INSERTS



MACHINE	CODE NO.	D	L	T	H	A	B	C
1/4 National S.S.	25DC	1.499	2	1/4	.862	5/16	3/32	4°
1/4 National S.S.	25DA-C	1.499	2	1/4	.620	9/32	3/32	4°
1/4 Sacma	25DC	1.499	2	1/4	.862	5/16	3/32	4°
1/4 Sacma	25DA-C	1.499	2	1/4	.620	9/32	3/32	4°
1/4 Super HiPro	25DC-28	1.999	2-1/8	3/4	.987	9/32	3/32	4°
1/4 Super HiPro	25DA-21C	1.999	2-1/8	3/4	.744	3/8	1/8	—
2 Waterbury Toggle	25DC-17	1.499	2	1/2	.862	9/16	1/16	5°
2 Waterbury Toggle	25DA-17C	1.499	2	1/2	.620	9/16	1/16	5°
1/4 National L.S.	25DC-19	1.499	3-1/8	1/4	.862	13/16	3/16	15°
1/4 National L.S.	25DA-19C	1.499	3-1/8	1/4	.620	13/16	3/16	15°
1/4 National H.S.	25DC-27	1.749	2	1/2	.987	5/8	5/32	15°
1/4 National H.S.	25DA-20C	1.749	2	1/2	.744	5/8	—	15°
1/4 Waterbury	25DC-18	1.999	2-27/32	5/8	.987	1-1/16	3/16	10°
1/4 Waterbury	25DA-18C	1.999	2-7/8	5/8	.744	1-1/16	3/16	10°
SP-11 Sacma	18DC-25	1.499	2	—	.737	9/32	3/32	4°
SP-11 Sacma	18DC-26	1.499	2	—	.550	9/32	3/32	4°
SP-11 Sacma	25DC-29	1.499	2-1/2	—	.862	9/32	3/32	4°
5/16 HiPro	31DC	1.999	2	1/2	.862	3/8	1/8	10°
5/16 HiPro	31DA-C	1.999	2	1/2	.744	3/8	1/8	10°
5/16 HiPro	31DC-11	1.999	2	1/2	.987	3/8	1/8	10°
SP-21 Sacma	31DC-13	1.999	2-1/2	—	.862	3/8	1/8	10°
SP-21 Sacma	31DC-18	1.999	3-1/2	—	.862	3/8	1/8	10°
SP-21 Sacma	31DA-18C	1.999	3-1/2	—	.744	3/8	1/8	10°
5/16 National S.S.	31DC-1	2.124	2-3/8	3/8	1.237	7/16	3/16	10°
5/16 National S.S.	31DA-1C	2.124	2-3/8	3/8	.992	7/16	3/16	10°
5/16 National L.S.	31DC-9	2.124	3-3/8	3/8	1.237	11/16	13/64	15°
5/16 National L.S.	31DA-9C	2.124	3-3/8	3/8	.992	11/16	13/64	15°
5/16 National H.S.	31DC-15	2.374	3	1/2	1.237	3/4	3/16	15°
5/16 National H.S.	31DA-13C	2.374	2-1/2	1/2	.992	3/4	—	15°
5/16 Hartford	31DC-1	2.124	2-3/8	3/8	1.237	7/16	3/16	10°
5/16 Hartford	31DA-1C	2.124	2-3/8	3/8	.992	7/16	3/16	10°
45 National H.S.	31DC-14	2.124	3	3/8	1.237	5/8	5/32	15°
45 National H.S.	31DA-12C	2.124	3	3/8	.992	5/8	—	15°

WARNING

Any heading punch may break or shatter under improper use. Government regulations require use of safety glasses and other appropriate safety equipment at all times in the vicinity of use.