

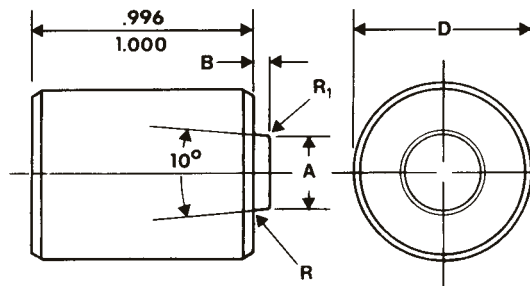
INDENTED HEXAGON PUNCHES

PLAIN HEXAGON PUNCHES

PUNCH NO.	SCREW SIZE	A	B	D	R	R ₁
		+0.000 -0.005	+0.001 -0.000	+0.0005 -0.0000	+0.005 -0.000	+0.005 -0.000
4 & 5 IHPU	4 & 5	0.150	0.025	0.5625	0.004	0.010
6 IHPU	6	0.220	0.035	0.5625	0.006	0.010
7 & 8 IHPU	7 & 8	0.220	0.045	0.5625	0.008	0.015
10 IHPU	10	0.280	0.045	0.5625	0.010	0.015
12 IHPU	12	0.280	0.060	0.5625	0.012	0.020
14 & 1/4 IHPU*	14 & 1/4*	0.338	0.070	0.8750	0.014	0.025
1/4 IHPU**	1/4**	0.380	0.070	0.8750	0.014	0.025
5/16 IHPU	5/16	0.452	0.085	0.8750	0.017	0.035
3/8 IHPU	3/8	0.505	0.105	1.0000	0.021	0.045

*3/8 HEX

**7/16 HEX



WARNING

Any heading punch may break or shatter under improper use. Government regulations require use of safety glasses and other appropriate safety equipment at all times in the vicinity of use.