

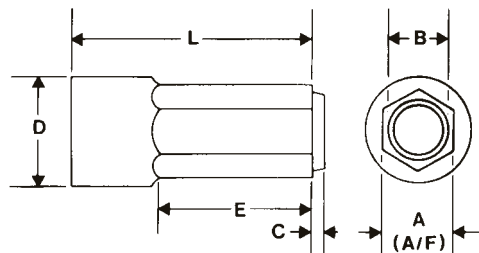
**PLAIN INDENTED HEX PINS**

**STANDARD INDENTED HEXAGON PINS**

SCREW SIZE	HEX SIZE A/F	PIN NUMBER	A/F	B	C	D	E	L	OPTIONAL L
			+0.000 -0.001	+0.005 -0.000	+0.002 -0.000	+0.000 -0.001	+0.015 -0.000	WTP STD	
2-3	1/8	2IHP 520	0.119	0.095	0.014	0.311	0.500	1.250	2.500
4-5	3/16	4IHP 520	0.179	0.150	0.020	0.311	0.500	1.250	2.500
6-8	1/4	6IHP 520	0.242	0.200	0.020	0.311	0.562	1.250	2.500
10-12	5/16	10IHP 620	0.302	0.265	0.030	0.374	0.562	1.250	2.500
1/4	3/8	1/4IHP 820	0.364	0.315	0.037	0.499	0.625	1.250	2.500
1/4	7/16	1/4(7)IHP 820	0.425	0.375	0.040	0.499	0.625	1.250	2.562
5/16	1/2	5/16IHP 1024	0.487	0.445	0.055	0.624	0.687	1.500	2.562
3/8	9/16	3/8IHP 1024	0.548	0.495	0.055	0.624	0.687	1.500	2.562

**METRIC INDENTED HEXAGON PINS**

HEXAGON SIZE A/F	PIN NUMBER	A/F	B	C	D	E	L	OPTIONAL L
		+0.000 -0.001	+0.005 -0.000	+0.002 -0.000	+0.000 -0.001	+0.015 -0.000	WTP STD	
4	M4IHP 520	0.150	0.123	0.016	0.311	0.500	1.250	2.500
5	M5IHP 520	0.189	0.156	0.019	0.311	0.562	1.250	2.500
5.5	M5.5IHP 520	0.209	0.173	0.019	0.311	0.562	1.250	2.500
6	M6IHP 520	0.228	0.189	0.019	0.311	0.562	1.250	2.500
7	M7IHP 620	0.265	0.220	0.022	0.374	0.562	1.250	2.500
7.3	M7.3IHP 520	0.265	0.220	0.022	0.311	0.562	1.250	2.500
8	M8IHP 620	0.305	0.252	0.026	0.374	0.562	1.250	2.500
10	M10IHP 820	0.383	0.321	0.039	0.499	0.625	1.250	2.500
12	M12IHP 1020	0.461	0.387	0.047	0.624	0.687	1.250	2.562
13	M13IHP 1020	0.499	0.419	0.047	0.624	0.687	1.250	2.562
15	M15IHP 1020	0.578	0.486	0.061	0.749	0.687	1.250	2.562



**NOTE:** Please specify length of pin when ordering.

**WARNING**

Any heading punch may break or shatter under improper use. Government regulations require use of safety glasses and other appropriate safety equipment at all times in the vicinity of use.