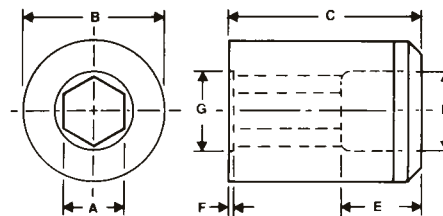


HEXAGON WASHER HEAD INSERTS

CONTAINED WASHER

SCREW SIZE	HEX SIZE	CODE	A	B	C	D	E	F	G
			+0.001 -0.001	+0.0005 -0.0000	+0.003 -0.000	+1/64 -0	+1/64 -0	+0.003 -0.000	
4	3/16	HWI-187	0.182	0.5520	0.750	5/16	5/16	0.009	0.234
5	3/16	HWI-187-1	0.182	0.5520	0.750	5/16	5/16	0.013	0.250
6	1/4	HWI-250-2	0.245	0.5520	0.750	5/16	5/16	0.016	0.315
6	1/4	HWI-250-1	0.245	0.7400	0.750	3/8	5/16	0.013	0.315
8	1/4	HWI-250-3	0.245	0.5520	0.750	5/16	5/16	0.017	0.335
8	1/4	HWI-250-4	0.245	0.7400	0.750	3/8	5/16	0.017	0.335
10	5/16	HWI-312	0.306	0.7400	0.750	7/16	5/16	0.017	0.400
10	5/16	HWI-312-1	0.306	0.5520	0.750	3/8	5/16	0.017	0.400
12	5/16	HWI-312-2	0.306	0.7400	0.750	7/16	5/16	0.020	0.415
1/4	3/8	HWI-375	0.368	0.9900	1.000	1/2	9/16	0.028	0.500
1/4	3/8	HWI-375-2	0.368	0.7400	0.750	1/2	5/16	0.023	0.500
1/4	7/16	HWI-437	0.429	0.9900	1.000	0.503	1/2	0.035	0.500
5/16	1/2	HWI-500	0.492	0.9900	1.000	5/8	1/2	0.030	0.650
5/16	1/2	HWI-500-1	0.492	1.2400	1.000	5/8	1/2	0.030	0.650
3/8	9/16	HWI-562	0.554	1.2400	1.000	3/4	1/2	0.032	0.750



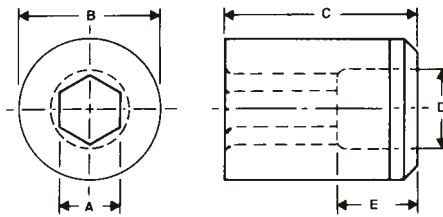
WARNING

Any heading punch may break or shatter under improper use. Government regulations require use of safety glasses and other appropriate safety equipment at all times in the vicinity of use.

HEXAGON WASHER HEAD INSERTS

FREE FLOWED WASHER

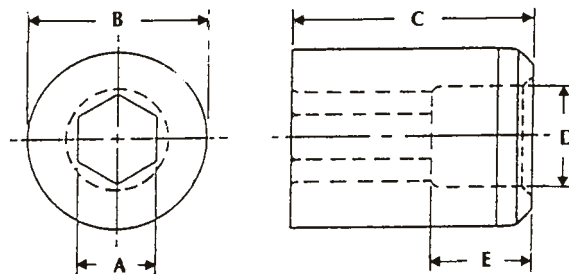
SCREW SIZE	HEX SIZE	CODE	A +0.001 -0.001	B +0.0005 -0.0000	C +0.003 -0.000	D +1/64 -0	E +1/64 -0
2-3	1/8	HI-125	0.121	0.5520	0.750	5/16	1/2
4-5	3/16	HI-187	0.182	0.5520	0.750	5/16	5/16
4-5	3/16	HI-187-1	0.182	0.7400	0.750	3/8	5/16
6-8	1/4	HI-250	0.245	0.5520	0.750	5/16	5/16
6-8	1/4	HI-250-1	0.245	0.7400	0.750	3/8	5/16
10-12	5/16	HI-312	0.306	0.7400	0.750	7/16	5/16
10-12	5/16	HI-312-1	0.306	0.5520	0.750	3/8	5/16
1/4	3/8	HI-375	0.368	0.9900	1.000	1/2	9/16
1/4	3/8	HI-375-2	0.368	0.7400	0.750	1/2	5/16
1/4	7/16	HI-437	0.429	0.9900	1.000	1/2	1/2
5/16	1/2	HI-500	0.492	0.9900	1.000	5/8	1/2
5/16	1/2	HI-500-1	0.492	1.2400	1.000	5/8	1/2
3/8	9/16	HI-562	0.553	1.2400	1.000	3/4	1/2
3/8	9/16	HI-562-1	0.553	1.4900	1.000	3/4	1/2
7/16	5/8	HI-625	0.612	1.4900	1.000	3/4	1/4
1/2	3/4	HI-750	0.737	1.4900	1.000	1 1/64	1/4



METRIC HEXAGON WASHER HEAD INSERTS

FREE FLOWED TYPE

NOMINAL HEX A/F	CODE	A (MM)	B +0.0005 -0.0000	C +0.003 -0.000	D + 1/64 - 0	E + 1/64 - 0
4	MHI-4	3.89	0.5520	0.750	5/16	5/16
5	MHI-5	4.85	0.5520	0.750	5/16	5/16
5.5	MHI-5.5	5.36	0.5520	0.750	5/16	5/16
6	MHI-6	5.87	0.5520	0.750	5/16	5/16
7	MHI-7	6.83	0.7400	0.750	3/8	3/8
7	MHI-7-3	6.83	0.5520	0.750	5/16	3/8
8	MHI-8	7.85	0.7400	0.750	7/16	3/8
8	MHI-8-2	7.85	0.5520	0.552	3/8	3/8
10	MHI-10	9.83	0.7400	0.750	1/2	3/8
10	MHI-10-1	9.83	0.9900	1.000	1/2	9/16
11	MHI-11	10.82	0.9900	1.000	1/2	1/2
12	MHI-12	11.81	0.9900	1.000	5/8	1/2
13	MHI-13	12.80	0.9900	1.000	5/8	1/2
13	MHI-13-1	12.80	1.2400	1.000	5/8	1/2
15	MHI-15	14.80	1.2400	1.000	3/4	1/2
16	MHI-16	15.77	1.2400	1.000	3/4	1/2
17	MHI-17	16.79	1.2400	1.000	3/4	1/2
18	MHI-18	17.78	1.4900	1.250	1	5/8
19	MHI-19	18.71	1.4900	1.250	1	5/8
21	MHI-21	20.78	1.4900	1.250	1	5/8



HEXAGON WASHER HEAD INSERTS

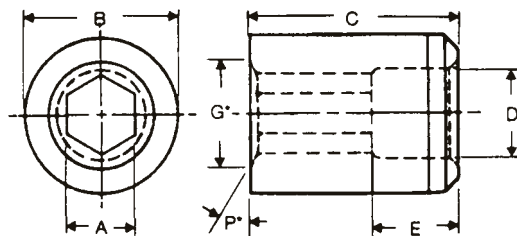
FLANGE TYPE

SCREW SIZE	HEX SIZE	CODE*	A ±0.001	B +0.0005 -0.0000	C +0.003 -0.000	D + 1/64 - 0	E + 1/64 - 0
4	3/16	HI-187-FL	0.182	0.5520	0.750	5/16	5/16
5	3/16	HI-187-1-FL	0.182	0.7400	0.750	3/8	5/16
6-8	1/4	HI-250-FL	0.245	0.5520	0.750	5/16	5/16
6-8	1/4	HI-250-1-FL	0.245	0.7400	0.750	3/8	5/16
10-12	5/16	HI-312-FL	0.306	0.7400	0.750	7/16	5/16
10	5/16	HI-312-1-FL	0.306	0.5520	0.750	3/8	5/16
1/4	3/8	HI-375-FL	0.368	0.9900	1.000	1/2	9/16
5/16	1/2	HI-500-FL	0.492	0.9900	1.000	5/8	1/2
5/16	1/2	HI-500-1-FL	0.492	1.2400	1.000	5/8	1/2
3/8	9/16	HI-562-FL	0.554	1.2400	1.000	3/8	1/2

METRIC FLANGE TYPE

NOMINAL CODE* HEX A/F	A (mm)	A ±0.001	B +0.0005 -0.0000	C +0.003 -0.000	D + 1/64 - 0	E + 1/64 - 0
5 MHI-5-FL	4.85	0.191	0.5520	0.750	5/16	5/16
5.5 MHI-5.5-FL	5.36	0.211	0.5520	0.750	5/16	5/16
6 MHI-6-FL	5.87	0.231	0.5520	0.750	5/16	5/16
7 MHI-7-FL	6.83	0.269	0.7400	0.750	3/8	3/8
7 MHI-7-3-FL	6.83	0.269	0.5520	0.750	5/16	3/8
8 MHI-8-FL	7.85	0.309	0.7400	0.750	3/8	3/8
8 MHI-8-2-FL	7.85	0.309	0.5520	0.750	3/8	3/8
10 MHI-10-FL	9.83	0.387	0.7400	0.750	1/2	3/8
10 MHI-10-1-FL	9.83	0.387	0.9900	1.000	1/2	9/16
11 MHI-11-FL	10.82	0.426	0.9900	1.000	1/2	1/2
12 MHI-12-FL	11.81	0.465	0.9900	1.000	5/8	1/2
13 MHI-13-FL	12.80	0.504	0.9900	1.000	5/8	1/2
13 MHI-13-1-FL	12.80	0.504	1.2400	1.000	5/8	1/2
15 MHI-15-FL	14.80	0.582	1.2400	1.000	3/4	1/2

*Specify P and G when ordering.



PRICES FURNISHED UPON REQUEST