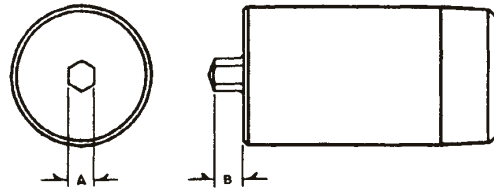


SOLID HEX RECESS PUNCHES



AMERICAN

SCREW SIZE	82° FLAT	A		B		BUTTON HEAD	A		B		SOCKET CAP	A		B	
		A	B	A	B		A	B	A	B					
2	9PHRP-02L	.0505	.043			9PHRP-02U	.0510	.033							
3	9PHRP-03L	.0630	.049			9PHRP-03U	.0630	.040							
4	9PHRP-04L	.0630	.060			9PHRP-04U	.0630	.040			9PHRP-04C	.0945	.056		
5	9PHRP-05L	.0786	.066			9PHRP-05U	.0786	.050			9PHRP-05C	.0945	.063		
6	9PHRP-06L	.0786	.071			9PHRP-06U	.0786	.050			9PHRP-06C	.1105	.070		
8	9PHRP-08L	.0945	.086			9PHRP-08U	.0945	.060			9PHRP-08C	.1424	.084		
10	9PHRP-10L	.1260	.097			9PHRP-10U	.1260	.080			9PHRP-10C	.1577	.100		
1/4	14PHRP-25L	.1577	.121			*	.1580	.095			14PHRP-25C	.1890	.140		
5/16	16PHRP-31L	.1890	.150			*	.1890	.115			16PHRP-31C	.2525	.170		
3/8	16PHRP-37L	.2200	.175			*	.2205	.135			16PHRP-37C	.3150	.200		
7/16	20PHRP-43L	.2515	.175												
1/2	20PHRP-50L	.3145	.190												
5/8	20PHRP-62L	.3775	.235												
3/4	24PHRP-75L	.5035	.235												

AVAILABLE IN PIN SLOT TYPE ON REQUEST *ONLY AVAILABLE AS TWO-PIECE PUNCHES



METRIC

SIZE	DIN 912	A(mm)		B(mm)		DIN 7991	A(mm)		B(mm)		DIN 7984	A(mm)		B(mm)	
		A	B	A	B		A	B	A	B					
M3	9AHRP-912-3	2.56	1.65			9AHRP-7991-3	2.05	1.18							
M4	9AHRP-912-4	3.06	2.34			9AHRP-7991-4	2.57	1.75			9AHRP-7984-4	2.56	2.36		
M5	9AHRP-912-5	4.08	2.84			9AHRP-7991-5	3.06	2.29			9AHRP-7984-5	3.06	2.77		
M6	14AHRP-912-6	5.12	3.35			14AHRP-7991-6	4.07	2.49			14AHRP-7984-6	4.09	3.06		
M8	14AHRP-912-8	6.12	4.80			16AHRP-7991-8	5.11	3.51			14AHRP-7984-8	5.11	4.27		
M10	16AHRP-912-10	8.16	5.56			20AHRP-7991-10	6.11	4.39							
M12	20AHRP-912-12	10.16	6.65			20AHRP-7991-12	8.14	4.55							



WARNING

Any heading punch may break or shatter under improper use. Government regulations require use of safety glasses and other appropriate safety equipment at all times in the vicinity of use.

TWO-PIECE HEX RECESS PUNCHES

AMERICAN



FLAT HEAD

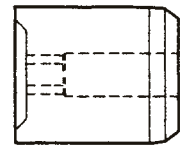
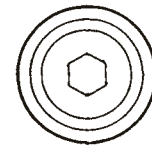
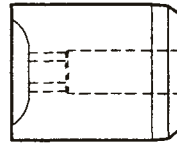
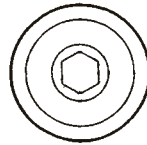
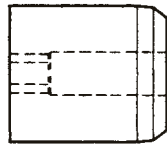
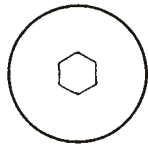
SCREW SIZE	PIN CODE	HOLDER CODE
4	HRP-04L	HRP-04LH
5	HRP-05L	HRP-05LH
6	HRP-06L	HRP-06LH
8	HRP-08L	HRP-08LH
10	HRP-10L	HRP-10LH
1/4	HRP-25L	HRP-25LH
5/16	HRP-31L	HRP-31LH
3/8	HRP-37L	HRP-37LH

BUTTON HEAD

SCREW SIZE	PIN CODE	HOLDER CODE
4	HRP-04U	HRP-04UH
5	HRP-05U	HRP-05UH
6	HRP-06U	HRP-06UH
8	HRP-08U	HRP-08UH
10	HRP-10U	HRP-10UH
1/4	HRP-25U	HRP-25UH
5/16	HRP-31U	HRP-31UH
3/8	HRP-37U	HRP-37UH

SOCKET CAP

SCREW SIZE	PIN CODE	HOLDER CODE
4	HRP-04C	HRP-04CH
5	HRP-05C	HRP-05CH
6	HRP-06C	HRP-06CH
8	HRP-08C	HRP-08CH
10	HRP-10C	HRP-10CH
1/4	HRP-25C	HRP-25CH
5/16	HRP-31C	HRP-31CH
3/8	HRP-37C	HRP-37CH



METRIC



DIN 912

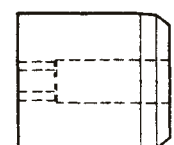
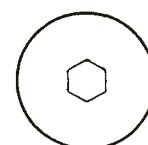
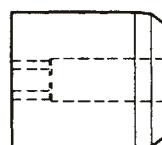
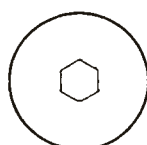
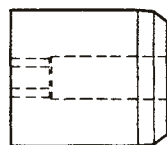
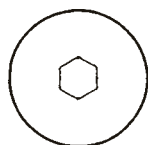
SCREW SIZE	PIN CODE	HOLDER CODE
M3	HRP-912-3	HRP-912-3H
M4	HRP-912-4	HRP-912-4H
M5	HRP-912-5	HRP-912-5H
M6	HRP-912-6	HRP-912-6H
M8	HRP-912-8	HRP-912-8H
M10	HRP-912-10	HRP-912-10H
M12	HRP-912-12	HRP-912-12H

DIN 7991

SCREW SIZE	PIN CODE	HOLDER CODE
M3	HRP-7991-3	HRP-7991-3H
M4	HRP-7991-4	HRP-7991-4H
M5	HRP-7991-5	HRP-7991-5H
M6	HRP-7991-6	HRP-7991-6H
M8	HRP-7991-8	HRP-7991-8H
M10	HRP-7991-10	HRP-7991-10H
M12	HRP-7991-12	HRP-7991-12H

DIN 7984

SCREW SIZE	PIN CODE	HOLDER CODE
M3	HRP-7984-3	HRP-7984-3H
M4	HRP-7984-4	HRP-7984-4H
M5	HRP-7984-5	HRP-7984-5H
M6	HRP-7984-6	HRP-7984-6H
M8	HRP-7984-8	HRP-7984-8H
M10	HRP-7984-10	HRP-7984-10H
M12	HRP-7984-12	HRP-7984-12H



WARNING

Any heading punch may break or shatter under improper use. Government regulations require use of safety glasses and other appropriate safety equipment at all times in the vicinity of use.