

KNOCKOUT PINS

STYLE 1

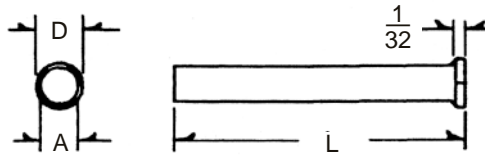
KNOCKOUT PIN WITHOUT HEAD
M2 HIGH SPEED MATERIAL
R/C 62-64



SEE PAGE 103

STYLE 2

KNOCKOUT PIN WITH HEAD
M2 HIGH SPEED MATERIAL
R/C 62-64
D=A + .010-.025

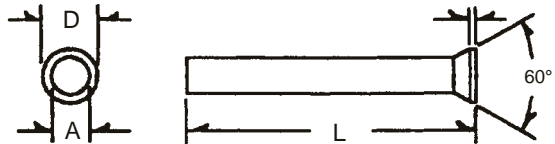


SEE PAGE 103

STYLE 3

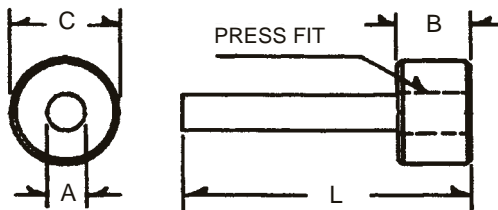
KNOCKOUT PIN WITH 60° HEAD
M2 HIGH SPEED MATERIAL
R/C 62-64
"D": VARIES WITH "A" AS FOLLOWS:

A	D
.059-.156	A + .020 MIN.
.1565-.236	A + .025 MIN.
.2365-.453	A + .040 MIN.
.4535 UP	A + .060 MIN.



STYLE 5

KNOCKOUT PIN WITH BUTTON ASSEMBLY
PIN: M2 HIGH SPEED MATERIAL - R/C 62-64
BUTTON: 01 MATERIAL - H/T AS SPECIFIED

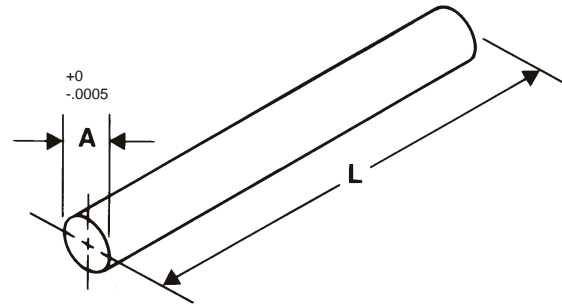


TO ORDER: SPECIFY STYLE, DIAMETER AND LENGTH.

WARNING

Any heading punch may break or shatter under improper use. Government regulations require use of safety glasses and other appropriate safety equipment at all times in the vicinity of use.

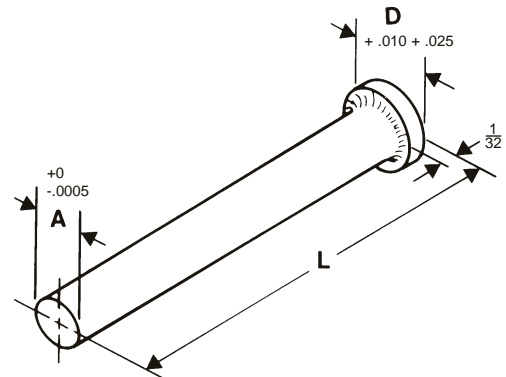
Straight Pin



Material: A.I.S.I. M-2
 Heat Treat: Triple drawn to RC 62-64
 Diameter Range: .062-1.000

To Order: Specify diameter **A** and length **L**

Headed Pin



Material: A.I.S.I. M-2
 Heat Treat: Triple drawn to RC 62-64
 Diameter Range: .062-1.000

To Order: Specify diameter **A** and length **L**

PRICES FURNISHED UPON REQUEST