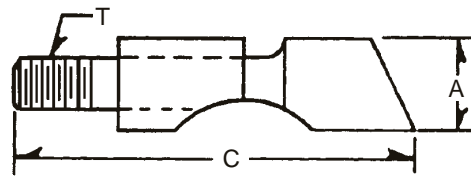
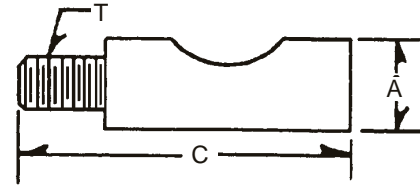


**DRAW BOLTS**



TYPE N



TYPE W

HEADER	CODE NO.	PUNCH DIA.	A	T	C	TYPE
1/8 W.F. Headmaster	B125WH	7/8	.374	1/4-28	1-9/16	W
1/8 National	B125N	7/8	.498	5/16-24	2-1/4	N
1/8 Hartford	B125HF-1	1-3/8	.562	5/16-24	2	N
1/8 Hartford	B125HF-2	7/8	.562	5/16-24	2	N
0 Toggle (Phillips)	B125T	7/8	.624	7/16-20	2-1/8	W
0 Toggle (Plain)	B125T-1	7/8	.624	3/8-16	2-3/16	W
0 Toggle (Plain)	B125T-2	7/8	.624	3/8-16	2-9/16	W
1 Toggle (Phillips)	B187T	7/8	.624	7/16-20	2-1/8	W
1 Toggle (Plain)	B187T-1	7/8	.748	1/2-13	2-9/16	W
1 Toggle (Plain)	B187T-2	1	.748	1/2-13	3-1/16	W
3/16 HiPro (Phillips)	B187H	7/8	.624	7/16-20	2-9/16	W
3/16 HiPro (Plain)	B187H-2	1	.624	7/16-20	2-9/16	W
3/16 HiPro (Plain)	B187H-3	1-1/8	.624	7/16-20	2-9/16	W
3/16 Headmaster	B187WH	7/8	.560	3/4-24	1-15/16	W
3/16 National	B187N	7/8	.748	1/2-13	2-9/32	N
3/16 H.S. National	BHS187N	1	.560	5/16-24	2	N
3/16 Hartford	B187HF-1	1-1/8	.562	5/16-24	2-5/8	N
3/16 Hartford	B187HF-2	1-1/2	.562	5/16-24	2-5/8	N
1/4 National	B250N	1-1/4	.873	1/2-13	3-1/4	N
2 Toggle (Phillips)	B250T	1-1/4	.622	7/16-20	2-13/16	W
2 Toggle (Plain)	B250T-1	1-1/16	.873	5/8-11	3-1/8	W
2 Toggle (Plain)	B250T-2	1-5/16	.873	5/8-11	3-3/4	W
5/16 HiPro	B312H	1-5/8	.748	1/2-13	3-1/2	W
5/16 National	B312N	1-5/8	.998	5/8-11	4-1/8	N
5/16 National	B312N-1	1-1/2	.998	5/8-11	4-1/8	N
5/16 National	B312N-2	1-3/4	.998	5/8-11	4-1/8	N
5/16 Hartford	B312HF-1	1-5/8	.750	1/2-20	3-1/2	N
3/8 National	B375N	1-13/16	.998	5/8-11	4-3/8	N
3/8 National	B375N-1	1-1/2	.998	5/8-11	4-3/8	N
3/8 National	B375N-2	1-3/4	.998	5/8-11	4-3/8	N
00 Manville	B00M	7/8	.499	7/16-20	1-31/32	W
0 Manville	B0M	7/8	.499	7/16-20	2-3/8	W
1 Manville	B1M	1-1/4	.624	7/16-20	2-3/4	W
250C Manville	B250M	1-1/4	.624	7/16-20	2-7/8	W

**WARNING**

Any heading punch may break or shatter under improper use. Government regulations require use of safety glasses and other appropriate safety equipment at all times in the vicinity of use.