

INDENTED HEX PINS AND PUNCHES

INDENTED HEX PINS AND PUNCHES

Indented hexagon pins and punches are available in many sizes and varieties.

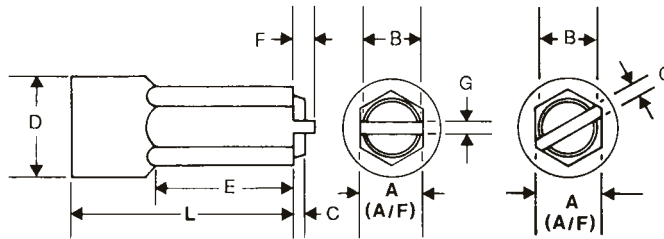
THEY CAN be made to meet your individual specifications.

Hex pins are available in plain, struck slot, POZIDRIV® and Phillips type styles. Pricing is done on an individual basis.

INDENTED HEXAGON SLOTTED PINS

SCREW SIZE	HEX SIZE A/F	PIN NUMBER	A/F	B	C	D	E	F	G	L	OPTIONAL L
			+0.000 -0.001	+0.005 -0.000	+0.002 -0.000	+0.000 -0.001	+0.015 -0.000	+0.002 -0.000	+0.002 -0.000	WTP STD	
4	3/16	4IHPSS 520	0.179	0.135	0.012	0.311	0.500	0.031	0.034	1.250	2.500
6	1/4	6IHPSS 520	0.242	0.210	0.015	0.311	0.562	0.040	0.043	1.250	2.500
7	1/4	7IHPSS 520	0.242	0.210	0.016	0.311	0.562	0.053	0.043	1.250	2.500
8	1/4	8IHPSS 520	0.242	0.210	0.018	0.311	0.562	0.060	0.049	1.250	2.500
10	5/16	10IHPSS 620	0.302	0.270	0.020	0.374	0.625	0.068	0.054	1.250	2.500
12	5/16	12IHPSS 620	0.302	0.270	0.020	0.374	0.625	0.087	0.059	1.250	2.500
1/4	3/8	1/4IHPSS 820	0.364	0.320	0.033	0.499	0.625	0.088	0.068	1.250	2.500
1/4	7/16	1/4(7)IHPSS 820	0.425	0.380	0.038	0.499	0.625	0.090	0.068	1.250	2.562

Add "AC" to the PIN number when ordering PINS with the slot across the corners.



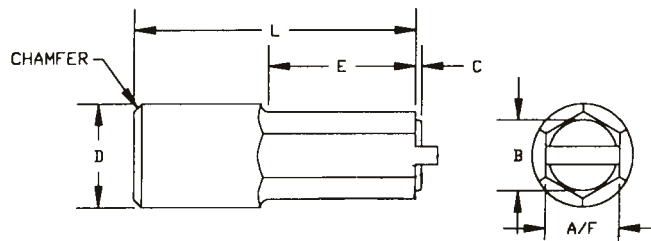
NOTE: Please specify length of pin when ordering.

WARNING

Any heading punch may break or shatter under improper use. Government regulations require use of safety glasses and other appropriate safety equipment at all times in the vicinity of use.

METRIC INDENTED STRUCK SLOT (ACROSS FLATS) HEXAGON PINS

HEXAGON SIZE A/F M/M	PIN NUMBER	A/F	B	C	D	E	L	OPTIONAL L	SLOT WIDTH ± 0.001	SLOT DEPTH ± 0.001
		+0.000 -0.001	+0.005 -0.000	+0.002 -0.000	+0.000 -0.001	+0.015 -0.000	WTP STD			
5	M5IHPSS 520	0.189	0.156	0.019	0.311	0.562	1.250	2.500	0.031	0.043
5.5	M5.5IHPSS 520	0.209	0.173	0.019	0.311	0.562	1.250	2.500	0.039	0.049
6	M6IHPSS 520	0.228	0.189	0.019	0.311	0.562	1.250	2.500	0.044	0.054
7	M7IHPSS 620	0.265	0.220	0.022	0.374	0.562	1.250	2.500	0.047	0.059
7.3	M7.3IHPSS 520	0.265	0.220	0.022	0.311	0.562	1.250	2.500	0.047	0.059
8	M8IHPSS 620	0.305	0.252	0.026	0.374	0.562	1.250	2.500	0.063	0.074
10	M10IHPSS 820	0.383	0.321	0.039	0.499	0.625	1.250	2.500	0.078	0.089
11	M11IHPSS 820	0.422	0.353	0.039	0.499	0.625	1.250	2.562	0.089	0.099
12	M12IHPSS 1020	0.461	0.387	0.047	0.624	0.687	1.250	2.562	0.098	0.108
13	M13IHPSS 1020	0.499	0.419	0.047	0.624	0.687	1.250	2.562	0.098	0.108
15	M15IHPSS 1020	0.578	0.486	0.061	0.749	0.687	1.250	2.562	0.113	0.123



NOTE: Please specify length of pin when ordering.

WARNING

Any heading punch may break or shatter under improper use. Government regulations require use of safety glasses and other appropriate safety equipment at all times in the vicinity of use.