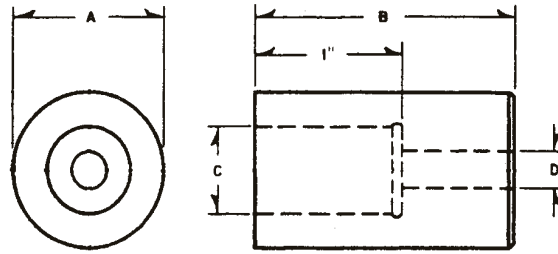


PRESS FIT PUNCH CASINGS

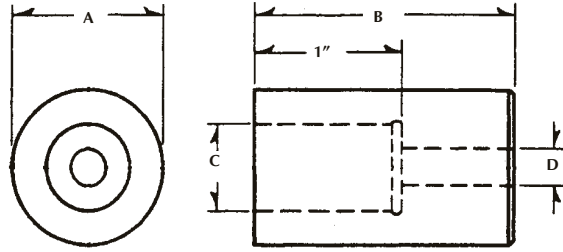


HEADER	CODE NO.	A	B	C	D
1/8 National	PC-12	7/8	1-17/32	.561	1/4
1/8 National	PC-12-3	7/8	1-17/32	.436	3/16
1/8 H S National	PC-12-5	7/8	1-11/16	.436	3/16
1/8 H S National	PC-12-6	7/8	1-11/16	.561	1/4
1/8 Headmaster	PC-12-7	3/4	1-5/8	.436	3/16
1/8 Headmaster	PC-12-8	3/4	1-5/8	.561	1/4
1/8 Headmaster	PC-12-11	7/8	1-5/8	.436	3/16
1/8 Headmaster	PC-12-12	7/8	1-5/8	.561	1/4
1/8 Hartford	PC-12-9	7/8	2	.436	3/16
1/8 Hartford	PC-12-10	7/8	2	.561	1/4
0 Toggle	PC-12-9	7/8	2	.436	3/16
0 Toggle	PC-12-10	7/8	2	.561	1/4
0 Toggle	PC-12-2	7/8	1-3/4	.561	1/4
0 Toggle	PC-12-4	7/8	1-3/4	.436	3/16
3/16 National	PC-18	7/8	1-29/32	.561	1/4
3/16 National	PC-18-6	7/8	1-29/32	.436	3/16
3/16 H S National	PC-18-2	1	1-3/4	.561	1/4
3/16 H S National	PC-18-5	1	1-3/4	.436	3/16
3/16 Headmaster	PC-12-9	7/8	2	.436	3/16
3/16 HiPro	PC-12-10	7/8	2	.561	1/4
3/16 HiPro	PC-18-2	1	1-3/4	.561	1/4
3/16 HiPro	PC-18-5	1	1-3/4	.436	3/16
H15 Nakashimada	PC-18-5	1	1-3/4	.436	3/16
H15 Nakashimada	PC-18-2	1	1-3/4	.561	1/4
3/16 Hartford	PC-18-2	1	1-3/4	.561	1/4
3/16 Hartford	PC-18-5	1	1-3/4	.436	3/16
3/16 Hartford	PC-25-3	1-1/2	2-1/2	.561	1/4
3/16 Hartford	PC-25-4	1-1/2	2-1/2	.998	1/2
3/16 Hartford	PC-25-18	1-1/2	2-1/2	.873	3/8
3/16 Hartford	PC-25-51	1-1/2	2-1/2	.747	3/8
SP01 Sacma	PC-12-9	7/8	2	.436	3/16
SP01 Sacma	PC-12-10	7/8	2	.561	1/4
3/16 Waterbury	PC-18-3	1-3/16	2-1/8	.561	1/4
3/16 Waterbury	PC-18-4	1-3/16	2-1/8	.873	3/8
2 Toggle	PC-25-26	1-1/4	2-1/2	.561	1/4
2 Toggle	PC-25-27	1-1/4	2-1/2	.873	3/8
2 Toggle	PC-25-28	1-5/16	2-3/8	.561	1/4
2 Toggle	PC-25-29	1-5/16	2-3/8	.873	3/8
H20 Nakashimada	PC-25-26	1-1/4	2-1/2	.561	1/4
H20 Nakashimada	PC-25-27	1-1/4	2-1/2	.873	3/8
H20 Nakashimada	PC-25-28	1-5/16	2-3/8	.561	1/4
H20 Nakashimada	PC-25-29	1-5/16	2-3/8	.873	3/8
1/4 National	PC-25-1	1-1/4	2-1/32	.561	1/4

WARNING

Any heading punch may break or shatter under improper use. Government regulations require use of safety glasses and other appropriate safety equipment at all times in the vicinity of use.

PRESS FIT PUNCH CASINGS



HEADER	CODE NO.	A	B	C	D
SP11 Sacma	PC-25	1-1/4	2-1/32	.436	3/16
SP11 Sacma	PC-25-1	1-1/4	2-1/32	.561	1/4
SP11 Sacma	PC-25-2	1-1/4	2-1/32	.873	3/8
SP11 Sacma	PC-25-26	1-1/4	2-1/2	.561	1/4
SP11 Sacma	PC-25-27	1-1/4	2-1/2	.873	3/8
1/4 Waterbury	PC-25-3	1-1/2	2-1/2	.561	1/4
1/4 Waterbury	PC-25-4	1-1/2	2-1/2	.998	1/2
1/4 Waterbury	PC-25-18	1-1/2	2-1/2	.873	3/8
1/4 Waterbury	PC-25-51	1-1/2	2-1/2	.747	3/8
5/16 HiPro	PC-31-11	1-5/8	2	.561	1/4
5/16 HiPro	PC-31-12	1-5/8	2	.873	3/8
5/16 HiPro	PC-31-13	1-5/8	2	.998	1/2
5/16 HiPro	PC-31-14	1-5/8	2	1.248	3/8
5/16 HiPro	PC-31-15	1-5/8	2-3/4	.561	1/4
5/16 Hartford	PC-31-23	1-5/8	2-9/16	.998	1/2
5/16 Hartford	PC-31-24	1-5/8	2-9/16	.873	3/8
5/16 Hartford	PC-31-25	1-5/8	2-9/16	.561	1/4
SP 21 Sacma	PC-31-16	1-5/8	2-3/4	.873	3/8
SP 21 Sacma	PC-31-17	1-5/8	2-3/4	.998	1/2
SP 21 Sacma	PC-31-18	1-5/8	2-3/4	1.248	5/8
SP 21 Sacma	PC-31-1	1-5/8	2-7/8	.873	3/8
SP 21 Sacma	PC-31-2	1-5/8	2-7/8	.998	1/2
SP 21 Sacma	PC-31-3	1-5/8	2-7/8	1.248	5/8
5/16 National	PC-31	1-5/8	2-7/8	.561	1/4
5/16 Waterbury	PC-31-4	1-13/16	2-3/4	.561	1/4
5/16 Waterbury	PC-31-5	1-13/16	2-3/4	.873	3/8
5/16 Waterbury	PC-31-6	1-13/16	2-3/4	.998	1/2
5/16 Waterbury	PC-31-7	1-13/16	2-3/4	1.248	5/8
5/16 Waterbury	PC-31-8	1-13/16	2-1/2	.873	3/8
5/16 Waterbury	PC-31-9	1-13/16	2-1/2	.998	1/2

•PUNCH CASINGS CAN BE MADE ON SPECIAL ORDER FOR ANY SIZES NOT LISTED.

WARNING

Any heading punch may break or shatter under improper use. Government regulations require use of safety glasses and other appropriate safety equipment at all times in the vicinity of use.