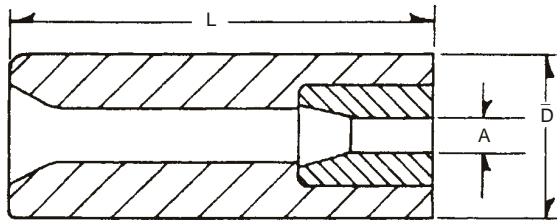
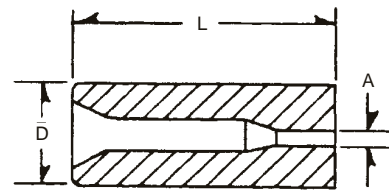


**CARBIDE QUILLS**



CARBIDE INSERTED



SOLID CARBIDE

MACHINE	CODE NO.	D	L
1/8 National H.S.	Q-125-3C	.437*	25/32
1/8 National DSSD	Q-125-1C	.437*	1-3/16
1/8 Hartford	Q-125-1C	.437*	1-3/16
1/8 Headmaster	Q-125-C	.562	1-3/8
0 Waterbury Toggle	Q-125-2C	.562	1-1/8
25 National H.S. DSSD	Q-187-3C	.499*	1-5/32
10 Wat. Tub. Riv. Hdr.	Q-187-5C	.499*	1-3/8
3/16 National H.S. DSSD	Q-187-3C	.499*	1-5/32
1 Waterbury Toggle	Q-187-1C	.687	1-5/8
3/16 HiPro	Q-187-1C	.687	1-5/8
3/16 Headmaster	Q-187-1C	.687	1-5/8
SP 01 Sacma	Q-187-1C	.687	1-5/8
3/16 Waterbury	Q-187-2C	.874	1-3/8
SP 11 Sacma	Q-250-5C	.874	1-5/8
3/16 Hartford	Q-250-C	.874	2
1/4 National DSSD	Q-250-C	.874	2
1/4 Sacma	Q-250-C	.874	2
45 National L.S. DSSD	Q-250-C	.874	2
H20A Nakashimada	Q-250-C	.874	2
1/4 National H.S. DSSD	Q-250-3C	.749	1-1/2
1/4 Waterbury	Q-250-2C	.999	1-3/4
2 Waterbury Toggle	Q-312-C	.874	2-1/2
5/16 National DSSD	Q-312-C	.874	2-1/2
5/16 HiPro	Q-312-3C	.999	2-1/2
SP 21 Sacma	Q-312-3C	.999	2-1/2
5/16 National H.S. DSSD	Q-312-5C	1.124	1-7/8
56 National L.S. DSSD	Q-312-6C	1.124	2-1/2
5/16 Waterbury	Q-312-4C	1.249	2-1/4
5/16 Hartford	Q-312-2C	1.249	2-1/2
3/8 Waterbury	Q-375-1C	1.499	2-1/2
68 National L.S. DSSD	Q-375-2C	1.374	3
810 National L.S. DSSD	Q-500-C	1.624	3-1/4
525 Raycarl	Q-525RC-C	1.060	1-5/16
45 Raycarl	Q-45RC-C	.998	2-1/4
575 Raycarl	Q-575RC-C	1.624	1-15/16
100 Raycarl	Q-100RC-C	1.498	3-1/2

\*These sizes furnished in solid carbide.

**WARNING**

Any heading punch may break or shatter under improper use. Government regulations require use of safety glasses and other appropriate safety equipment at all times in the vicinity of use.