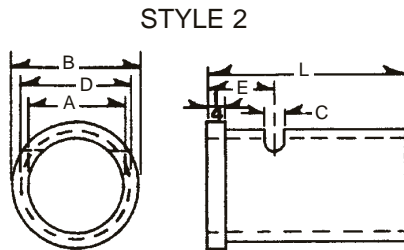
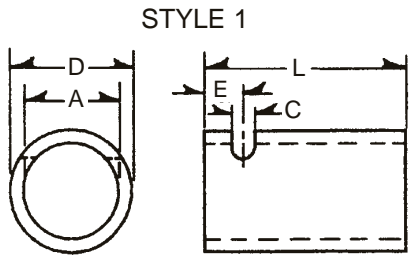


**SPRING PUNCH BUSHINGS & BACKING PLUGS**

**SPRING PUNCH BUSHINGS**

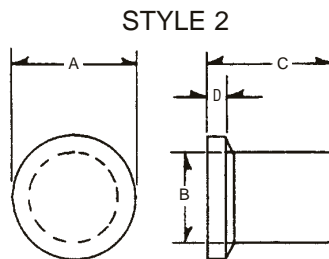
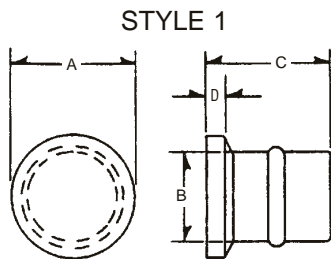


Specials Available  
On Request

HEADER	CODE	A	D	L	E	C
1/8 H.S. National*	SP-125-2	.750	.876	1-9/16	11/16	.313
1/8 National	SP-125-N	.8125	1.001	1-7/16	3/8	.250
1/8 Headmaster	SP-125-0	.8125	1.001	1-7/16	9/32	.192
1/8 Hartford	SP-125-3	.8125	1.001	2-3/64	3/8	.282
0 Toggle	SP-125-0	.8125	1.001	1-7/16	9/32	.192
0 Toggle	SP-125-1	.875	1.001	1-7/16	9/32	.192
3/16 H.S. National*	SP-187-5	.875	1.001	2-1/16	3/4	.313
3/16 National	SP-187-N	.875	1.126	1-3/4	3/8	.250
3/16 National	SP-187-12	.875	1.126	1-7/8	3/8	.250
3/16 Headmaster	SP-187-1	.875	1.126	1-1/2	9/32	.250
3/16 Hartford†	SP-187-11	.875	1.126	2-11/16	7/16	.343
1 Toggle	SP-187-1	.875	1.126	1-1/2	9/32	.250
SP 01 Sacma	SP-187-1	.875	1.126	1-1/2	9/32	.250
3/16 HiPro	SP-187-1	.875	1.126	1-1/2	9/32	.250
3/16 HiPro	SP-187-4	.875	1.126	2-1/4	9/32	.250
H15 Nakashimada	SP-187-1	.875	1.126	1-1/2	9/32	.250
H15 Nakashimada	SP-187-4	.875	1.126	2-1/4	9/32	.250
1/4 National	SP-250-N	1.250	1.501	2-7/16	17/32	.250
2 Toggle	SP-250-2	1.250	1.501	2-1/4	9/32	.250
H20 Nakashimada	SP-250-N	1.250	1.501	2-7/16	17/32	.250
1/4 Super HiPro	SP-250-SH	1.251	1.501	2-15/16	5/8	.250
SP 11 Sacma	SP-250-7	1.250	1.501	2-1/32	9/32	.250
1/4 Waterbury	SP-250-3	1.250	1.502	3-3/8	9/32	.250
5/16 National	SP-312-N	1.375	1.626	2-13/16	31/64	.250
5/16 Hartford	SP-312-6	1.375	1.625	3-1/16	33/64	.313
5/16 Hartford†	SP-312-6A	1.375	1.625	3-5/64	1/2	.344
5/16 HiPro	SP-312-3	1.375	1.626	2-43/64	9/32	.313
SP 21 Sacma	SP-312-8	1.375	1.626	2-9/16	9/32	.313
3/8 National	SP-375-N	1.750	2.001	2-15/16	7/16	.347

\* Style 2      † With Vent Groove

**SPRING PUNCH BACKING PLUGS**



HEADER	CODE	C	B	D	A	STYLE
1/8 Headmaster	BP-125WH	23/32	1/2	1/4	.810	2
1/8 National	BP-125N	17/32	19/32	1/32	.777	1
1/8 H.S. National	BP-125HSN	17/32	—	—	.500	—
1/8 Hartford	BP-125HF	15/16	17/32	1/4	.780	2
0 Toggle, 00 Manville	BP-125T	27/32	9/16	1/4	.995	2
1 Toggle, 0 Manville	BP-187T	41/64	21/32	7/64	1.121	2
3/16 HiPro	BP-187H	1-25/64	21/32	55/64	.871	2
3/16 Headmaster	BP-187WH	41/64	21/32	7/64	1.121	2
3/16 Hartford	BP-187HF	1.317	11/16	1/4	.875	2
3/16 National	BP-187N	45/64	21/32	3/64	.870	1
SP 01 Sacma	BP-SP01	37/64	.590	5/64	.866	2
1/4 National	BP-250N	1-1/8	15/16	5/16	1.230	1
2 Toggle, 1 Manville	BP-250T	51/64	15/16	11/64	1.497	2
SP 11 Sacma	BP-SP11	3/4	.884	1/8	1.247	2
5/16 HiPro	BP-312H	1-9/16	7/8	5/8	1.808	2
5/16 National	BP-312N	1-1/8	1-1/32	11/64	1.370	1
5/16 Hartford	BP-312HF	1.590	.669	1/8	1.000	—
SP 21 Sacma	BP-SP21	1-9/64	.913	1/8	1.370	2

**WARNING**

Any heading punch may break or shatter under improper use. Government regulations require use of safety glasses and other appropriate safety equipment at all times in the vicinity of use.